

What are students learning at The University of Iowa?



Student Experience in the Research University (SERU)

Student Satisfaction and Interaction with Faculty

Student Experience in the Research University

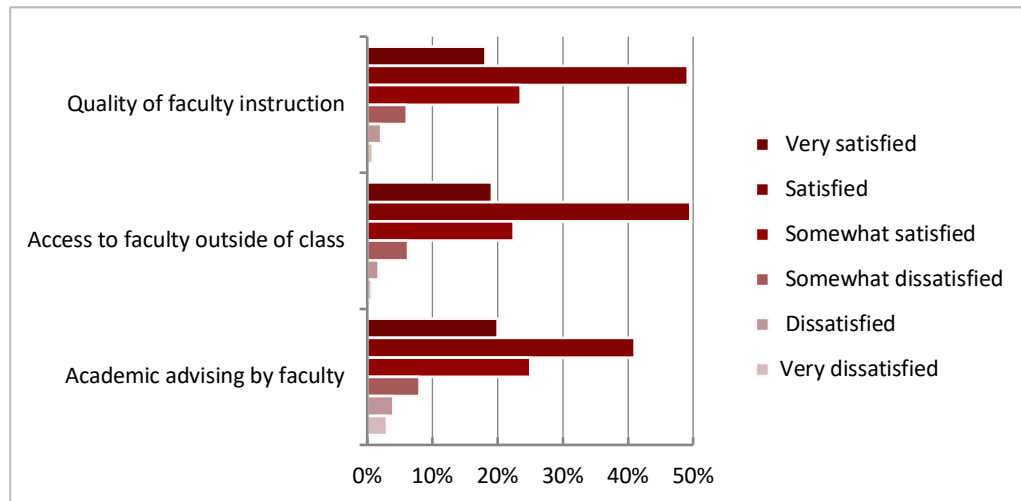
Student learning in higher education is complex and multidimensional, leading to academic, social, and personal development. To gain a better understanding of student experiences at UI, we administered the Student Experience in the Research University (SERU) survey to all degree-seeking undergraduates during Spring 2018.

Nearly 20% of students responded, and the profile of respondents was broadly representative of the undergraduate population in terms of academic characteristics, college, race/ethnicity, and year of study. This brief report provides an overview of student responses to questions about their satisfaction and interaction with faculty members.

For more information about SERU, visit uiowa.edu/seru

This *SERU Brief* provides a sample of responses to SERU survey questions on student satisfaction and interaction with faculty members. The majority of students responded positively to questions about faculty (Figure One): 90% report being very satisfied, satisfied, or somewhat satisfied with the quality of faculty instruction, and 92% with the availability of faculty outside of class; 86% express satisfaction with academic advising by faculty.

Figure One: Reported Levels of Satisfaction with Faculty Members and TAs



The majority of students also reported high levels of engagement in specific types of interactions with faculty:

95% Agree that faculty maintain respectful interactions in class

89% Often have instructors who increase their enthusiasm for the subject

91% Agree that students are treated equitably and fairly by faculty

87% Often have opportunities for active participation in class

90% Express satisfaction with the quality of courses in their major

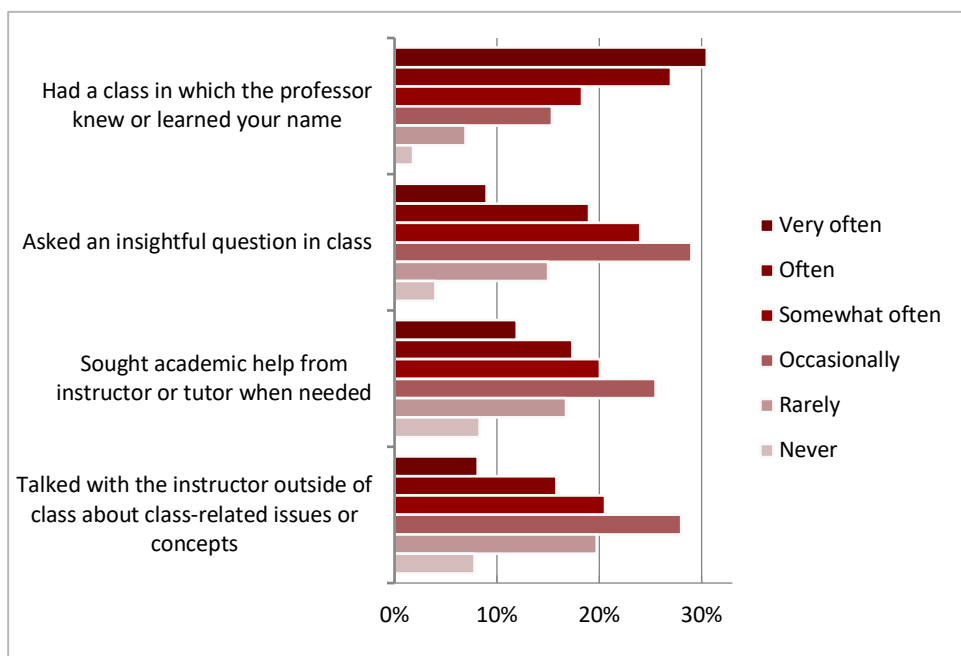
84% Often receive prompt and meaningful feedback on their work

While reported levels of satisfaction and engagement are consistently high, reported frequency of student interactions with faculty are somewhat more variable.

When asked how often they had a class in which the professor knew or learned their name, 58% of students indicated often or very often; fewer than 9% responded rarely or never. The remaining one-third of students fell in between, indicating occasionally or somewhat often, as shown in Figure Two.

While many report the perception that faculty know who they are, they report relatively fewer direct interactions with faculty. Only 29% reported that they often or very often sought academic help from an instructor or a tutor when needed; almost as many (25%) reported rarely or never. Students reported similar levels of frequency in talking with an instructor outside of class about concepts related to the course: Just under one-fourth reported often or very often, while slightly over one-fourth reported rarely or never.

Figure Two: Reported Frequency of Interactions with Faculty Members



These patterns of interaction are consistent with student responses to another item which asked them to identify obstacles to success in their academic work (Figure Three).

Figure Three: Obstacles Frequently Cited by Students

Approximately ...	Students report ...
1 in 3	difficulty doing their best work on tests
1 in 4	not being comfortable asking for help with course work
1 in 4	difficulty speaking up in class
1 in 4	concern about being judged negatively by other students

To take a closer look at SERU data related to student perceptions of faculty, academic engagement, and obstacles to their success, or to explore how these perceptions vary among different segments of the student population, contact seru@uiowa.edu.

Sample invitation to complete the SERU survey:

TELL US.

**Student Voices
Make a Difference**

The University of Iowa has over 24,000 undergraduates, in more than 100 different fields of study, and we want to know what each of you thinks.

Tell us by taking a survey that lets us hear from all of you – about your classes, your major, life as a student here, and your overall experience at UI. When we hear from you, *everybody* benefits.

Digging Deeper

This *Brief* provides a snapshot of responses to just a few SERU questions. Other sections of SERU address a wide range of topics, including:

- how students use their time, in and out of class
- perceptions of majors
- future plans
- student financial concerns
- perceptions of their learning and development
- climate for diversity
- community involvement
- reflections on their most meaningful learning experience at UI

The full survey is online at uiowa.edu/seru

To view student responses to other SERU questions, or to explore responses by college, major, class level, or other demographic variables, contact seru@uiowa.edu